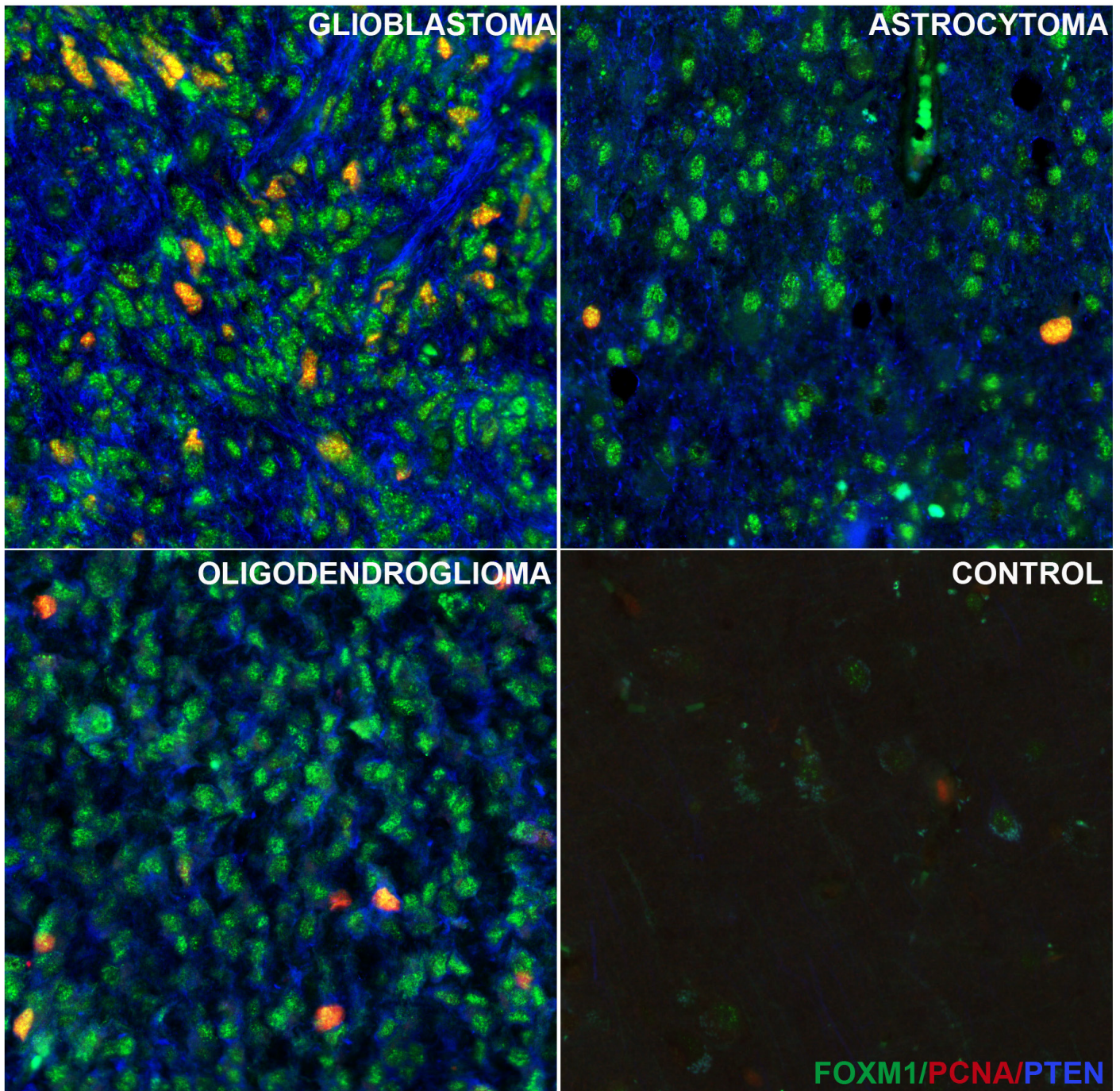


PRIMARY ANTIBODIES FOR CANCER RESEARCH



GLIOMA MARKERS

PRIMARY ANTIBODIES TARGETING GLIOMA

Gliomas are one of the most aggressive and lethal solid tumors of the central nervous system. Despite the alarming numbers, the molecular pathogenetic mechanisms of gliomas are not yet fully elucidated.

Nowadays, several approaches aim to understand the biology of the disease and identify promising markers, which may provide effective novel therapies.

Understanding the dynamic glioma tumor microenvironment is necessary for the development of new immunotherapeutic strategies.

Gliomas are well-known tumors at the molecular level. However, these advances have not been translated into therapeutic benefits for the patients.

We must expand our knowledge as a step toward the design of practical and safe treatments. Therefore, the identification of molecular biomarkers is unquestionably essential and urgent for an accurate prognosis and development of critical therapeutic targets in gliomas.

NEEDS

- Specific and effective biomarkers able to identify early stages of the disease and reliable prognostic markers for predicting clinical responses as well as defining the divergent molecular pathways underlying the development of the disease.
- Protein-related data such as citations, application-specific validation and sequence information, and homology, are paramount in the buying process and the single biggest driver for antibody choice.
- A trusted source of data in order to feel confident in the purchase of new antibodies.

WHY ATLAS ANTIBODIES?

Atlas Antibodies continues searching for better early detection markers and new therapeutic targets.

- Over 12,000 product citations worldwide
- Application-specific Enhanced Validation
- Strong roots in the Human Protein Atlas
- Transparency & Open Access Data

Gliomas are one of the most aggressive and lethal solid tumors of the central nervous system. Despite the alarming numbers, the molecular pathogenetic mechanisms of gliomas are not yet fully elucidated. Nowadays, several approaches aim to understand the biology of the disease and identify promising markers, which may provide effective novel therapies. This white paper summarizes the recent developments in glioma

Gliomas are solid tumors of the central nervous system (CNS). They arise from the neoplastic transformation of glial cells, namely astrocytes, oligodendrocytes, and ependymal cells.

Brain tumors comprise approximately 2% of all adult cancers but form a larger fraction within the group of childhood tumors. Gliomas account for about 80% of all malignant brain tumors and are classified according to the cell type of origin, differentiation, and malignancy grade. Gliomas show considerable variability in age of onset, grade of severity, histological features, and ability to progress, as well as to metastasize.

Survival time after diagnosis with glioma varies significantly depending on grade. According to the World Health Organization (WHO) classification, gliomas are divided into four grades. Grade 1, 2, and 3 are classified as low-grade gliomas, while grade 4 are classified as high-grade gliomas. Unfortunately, the prognosis for high-grade gliomas is poor due to limited possibilities of curative treatment.

The most common form of glioma is an astrocytoma, representing approximately 50% of all gliomas. Grade 4 astrocytoma is also known as glioblastoma or glioblastoma multiforme (GBM).

GBM is the most frequent and malignant histological type, accounting for 65% of gliomas with a very poor 5-year survival (less than 5%). GBM is typically classified into three subtypes, namely proneural, classical and mesenchymal, according to the gene expression of various biomarkers, including platelet-derived growth factor receptor (PDGFR), neurofilament light chain (NF-L), epidermal growth factor receptor (EGFR), and CD44, respectively. Pro-neural to mesenchymal transition of glioma is associated with aggressive phenotypes, unfavorable prognosis, and treatment resistance.

classification and the key molecular markers for glioma stratification. Next, it highlights the glioma proteome with a list of relevant genes with favorable and unfavorable prognostic values in glioma. It then focuses on the glioma tumor microenvironment that may provide helpful insights when developing novel therapeutic strategies.

Gliomas are well-known tumors at the molecular level. However, these advances have not been translated into therapeutic benefits for the patients.

While our knowledge about the molecular biology of gliomas is rapidly expanding and is, to some extent, already assisting us in the design of tumor-tailored therapeutics, such as immunotherapy treatments, we are still struggling to develop efficient treatments. As a result, the overall survival in patients with gliomas has not significantly increased in the last decades.

Typical treatments for gliomas involve surgical resection of the tumor mass, radiotherapy, and chemotherapy treatments. However, relapse or even recurrence of gliomas is common and mainly due to their infiltrative growth and their high proliferative abilities.

Due to the absence of definitive surgical and medical treatments currently available, an early diagnosis coupled with an accurate tumor classification is crucial to select a personalized treatment.

Moreover, the functional heterogeneity in gliomas is defined not only by the genetic makeup of glioma cells but also through microenvironment-driven epigenetic influences that regulate glioma cell stemness.

Hence, elucidating the state transition programs and mechanisms driving cellular plasticity is essential to overcome current therapeutic limitations in GBM.

We must expand our knowledge as a step toward the design of practical and safe treatments. Therefore, the identification of molecular biomarkers is unquestionably essential and urgent for an accurate prognosis and development of critical therapeutic targets in gliomas.

Cover Image: Multiplexed IHC-IF staining of human glioblastoma, astrocytoma, oligodendrocytoma and normal cortex samples using the Anti-FOXM1 monoclonal AMAb91766 (nuclear, in green), the Anti-PCNA polyclonal HPA030522 (nuclear, in red) and the Anti-PTEN monoclonal AMAb91736 (cytoplasmic, in blue) antibodies.

GLIOMA CLASSIFICATION AND KEY MOLECULAR PATHOLOGY.

Since 2008 the classification of brain tumors by the World Health Organization (WHO) has continued to evolve up to today with the latest fifth edition (WHO CNS5, 2021)(Louis 2021).

The updated classification emphasizes the need for a classification of gliomas based on histological and molecular genetic features for clinical diagnosis and outcome prediction.

With the WHO CNS5 2021 edition, several IHC diagnostic and prognostic markers have been added to the diagnostic criteria of gliomas. The new seven-layers approach for glioma classification is shown in **figure 1**.

Antibodies against ATRX, the mutated forms of IDH1 (IDH R132H), and histone H3 (H3K27M) are used to detect the respective mutations. Analysis of deletion of 1p and 19q chromosome arms is done by multiplex ligation-dependent probe amplification (MLPA) or, less commonly, by fluorescent in situ hybridization.

The distinction between the different forms of glioma is mainly based on morphological features, mutations and chromosomal aberrations (**figure 2**).

In gliomas neuropathological diagnostics, antibodies directed towards proteins such as IDH (isocitrate dehydrogenase), ATRX (alpha thalassemia/mental retardation syndrome X-linked), GFAP (glial fibrillary acidic protein), SYN (synaptophysin), EGFR (epidermal growth factor receptor), p53 (tumor suppressor protein 53), and the proliferation marker Ki-67 (MKI67) are the gold standard and routinely used.

Immunohistochemistry (IHC) plays a vital role in distinguishing between different tumor types. **Figures 3-6** show some examples of IDH1, ATRX, and GFAP multiplexed IHC-IF staining in different glioma grades.

GLIOMAS: THE 7 LAYERS CLASSIFICATION (WHO 2021)

1. Isocitrate dehydrogenase (IDH1) mutations
2. α -thalassemia/mental-retardation-syndrome-X-linked gene (ATRX) expression
3. 1p/19q co-deletion
4. CDKN2A/B homozygous deletion on 9p21
5. TERT promoter mutation/EGFR gene amplification and/or chromosomes 7 gain and 10 loss (+7/-10)
6. Histone H3 G34R/V mutations
7. Histone H3 K27M/ mutations

FIGURE 1.
The 7 layers approach for glioma classification based on WHO CNS5 2021.

MOLECULAR PATHOLOGY IN HIGH GRADE GLIOMAS

Methylation:

MGMT, PTEN, RB1, TP53, CDKN2A, PDGFB, EMP3, SOCS1, PCDHGA11, OLIIG1/2

Chromosomal aberrations:

Gain: 1q, 19q, 20q
Loss: 6q, 9p, 13q, 14q, 22q
Concomitant: +7/-10

Mutations:

PTEN, ATRX, TP53, RB1, IDH1/2, NF1, EGFR

Amplifications:

MET, EGFR, PIK3CA, PDGFRA, CCND2, MDM2/4

Deletions:

CDKN2A, CDKN2B, CDKN2C, PTEN, RB1, NFKB1A

FIGURE 2.
Molecular pathology in high-grade gliomas.

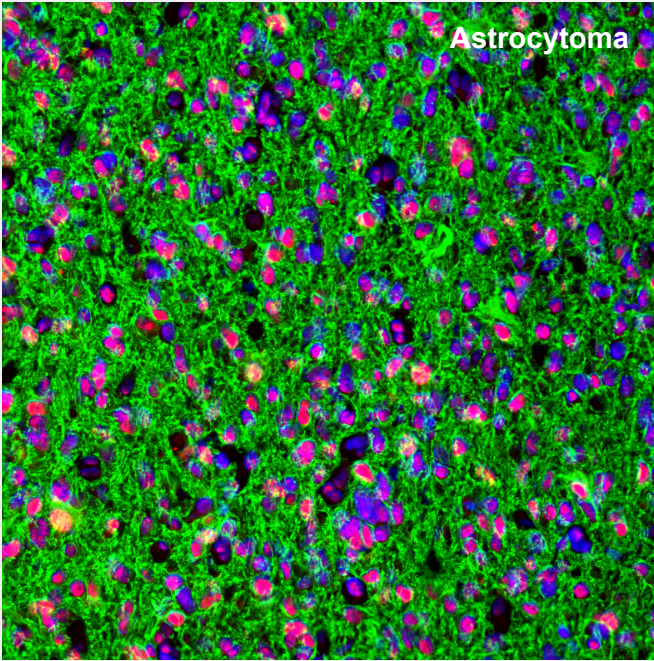


FIGURE 3. ATRX and GFAP in astrocytoma.

Multiplexed IHC-IF staining of astrocytoma showing ATRX (nuclear, red) and GFAP (cytoplasmic, green) immunoreactivity in tumor cells. The **Anti-ATRX AMAb90784** and **Anti-GFAP AMAb91033** monoclonal antibodies were used. Nuclei were counterstained with DAPI.

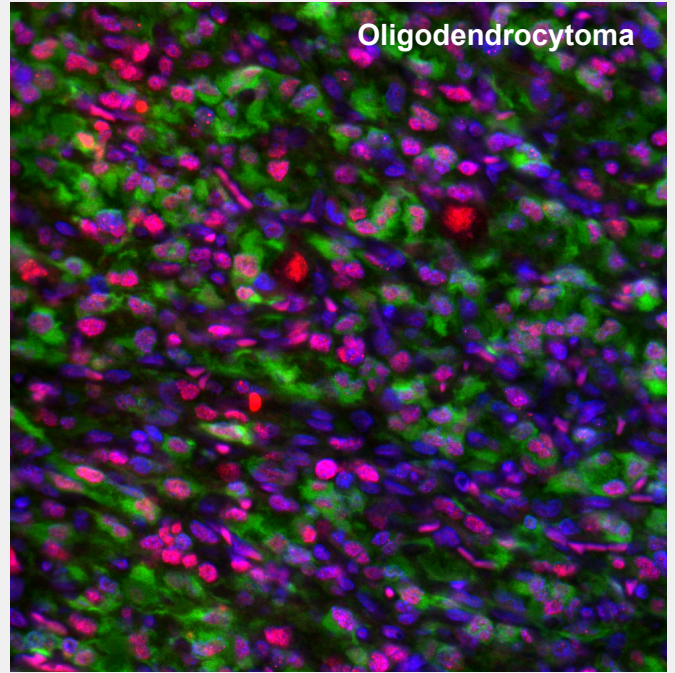


FIGURE 4. ATRX and IDH1 in oligodendrocytoma.

Multiplexed IHC-IF staining of anaplastic oligodendroglioma showing ATRX (nuclear, red) and IDH1 (cytoplasmic, green) immunoreactivity in tumor cells. The **Anti-ATRX AMAb90784** and **Anti-IDH1 AMAb90578** monoclonal antibodies were used, nuclei were counterstained with DAPI.

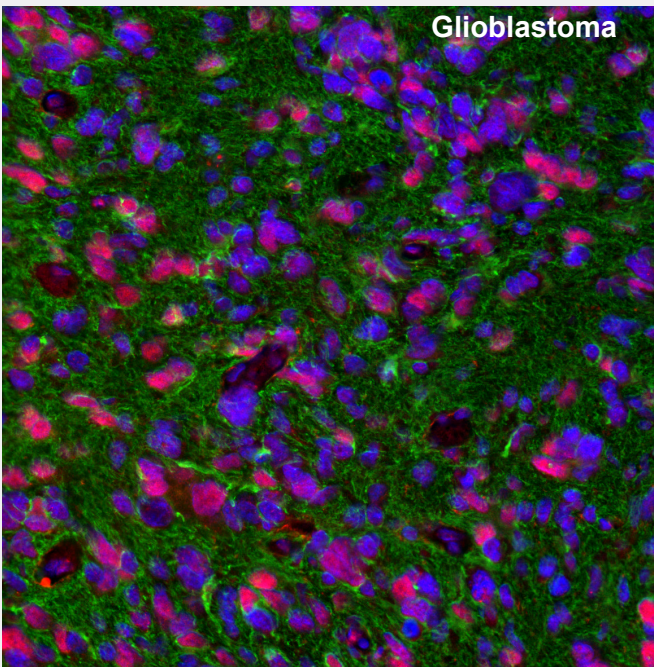


FIGURE 5. ATRX and GFAP in glioblastoma.

Multiplexed IHC-IF staining of glioblastoma multiforme showing ATRX (nuclear, red) and GFAP (cytoplasmic, green) immunoreactivity in tumor cells. The **Anti-ATRX AMAb90784** and **Anti-GFAP AMAb91033** monoclonal antibodies were used, nuclei were counterstained with DAPI.

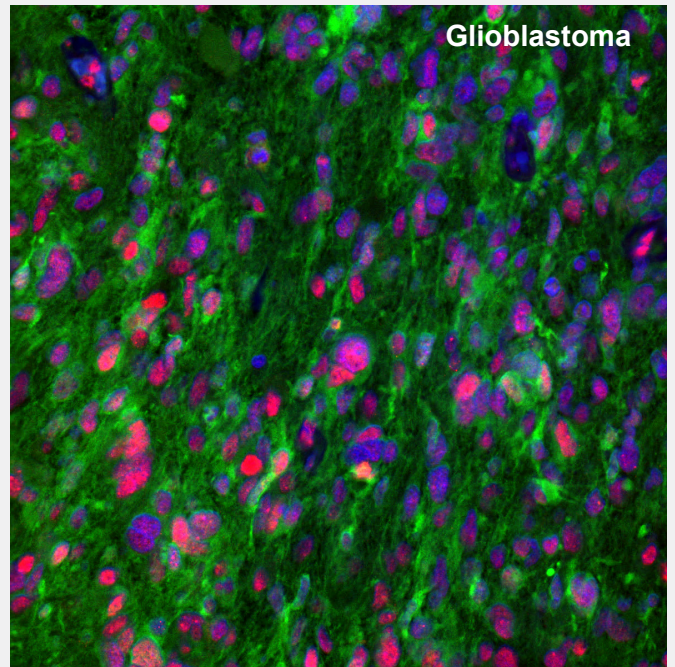


FIGURE 6. ATRX and IDH1 in glioblastoma.

Multiplexed IHC-IF staining of glioblastoma multiforme showing ATRX (red) and IDH1 (green) immunoreactivity in tumor cells using the **Anti-ATRX HPA001906** polyclonal and the **Anti-IDH1 AMAb90578** monoclonal antibodies. Nuclei were counterstained with DAPI.

ADULT AND PEDIATRIC GLIOMAS: DISTINCTIVE FEATURES

ADULT-TYPE DIFFUSE GLIOMAS

ASTROCYTOMAS

IDH-mutant, 1p/19q non-co-deleted
Grade 2,3,4
IDH1-2, ATRX, TP53, CDKN2A/B

OLIGODENDROGLIOMAS

IDH-mutant, 1p/19q-co-deleted
Grade 2,3
IDH1-2, 1p/19q, TERT, CIC, FUBP1, NOTCH1

GLIOBLASTOMAS

IDH-wildtype
Grade 4
TERT, chromosomes +7/-10, EGFR

PEDIATRIC-TYPE DIFFUSE GLIOMAS

LOW-GRADE

DIFFUSE ASTROCYTOMA

Grade 1
MYB- or MYBL1-altered

ANGIOCENTRIC GLIOMA

Grade 1
ATRX, p53, IDH1 (R132H), BRAF V600E,
H3 K27M

POLYMORPHOUS NEUROEPITHELIAL TUMOR OF THE YOUNG

Grade 1
FGFR3 amplification, BRAF V600E

DIFFUSE LOW-GRADE GLIOMA

G*
MAPK

HIGH-GRADE

DIFFUSE MIDLINE GLIOMA

G*
H3 K27-altered, PDGFR- α

DIFFUSE HEMISPHERIC GLIOMA

Grade 4
H3 G34-mutant

DIFFUSE PEDIATRIC-TYPE HIGH-GRADE GLIOMA

G*
H3-wildtype and IDH-wildtype

INFANT-TYPE HEMISPHERIC GLIOMA

G*
ALK, ROS1, NTRK1/2/3, or MET

An essential update in the WHO CNS5 2021 classification of brain tumors is the distinction of diffuse gliomas into adult-type and pediatric-type, all with distinct responses to treatment and outcomes (**figure 7**).

The distinction between different forms of gliomas is mainly based on morphological features; however, IHC analysis plays a vital role in distinguishing between different tumor types, particularly when the tumor is poorly differentiated.

Numerous reports have highlighted substantial differences in adult and pediatric gliomas mainly based on histological observations, frequency, location, and pathologic spectrum (Broniscer 2007). Pediatric high-grade gliomas, for example, often arise in brain regions that are rarely targeted in adult disease.

Pediatric diffuse gliomas are more complex and molecularly distinct from those in adults. Pediatric gliomas are generally classified as low-grade and high-grade and are characterized by circumscribed growth and frequent H3 and BRAF gene fusions or mutations (Louis 2021).

On the other hand, PTEN mutations and EGFR amplification, frequent in adult primary glioblastoma, are less common in children (Pollack 2006). Furthermore, in adults, secondary glioblastomas rarely contain EGFR amplification (Furnari 2007).

Mutations in TP53, CDKN2A, and PIK3CA are common in adult and pediatric high-grade gliomas (Gallia 2006). Furthermore, the platelet-derived growth factor receptor- α (PDGFR- α) is the predominant target of focal amplification in high-grade childhood glioma and may be a valuable target for the pediatric population (Paugh 2010).

Significant differences in copy number alterations distinguish childhood and adult glioblastoma. No IDH1 hotspot mutations were found in pediatric tumors, highlighting molecular differences with adult secondary glioblastoma. Frequent gain of chromosome 1q and lower frequency of chromosome 7 gain and 10q loss also clearly distinguished childhood from adult high-grade gliomas (Paugh 2010).

FIGURE 7. Adult- and pediatric-type of diffuse gliomas: classification, grade and key diagnostic genes.

Gliomas are classified according to cell type of origin, differentiation and malignancy grade. Type, grade, and molecular signatures of glioma determine diagnosis and treatment options. Based on an integrative molecular profiling, diffusely infiltrating gliomas in adults are separated into three overarching groups depending on origins, mutations in isocitrate dehydrogenase (IDH), ATRX and 1p/19q expression. In the pediatric population diffuse gliomas are classified as low-grade gliomas and high-grade gliomas. G* (attribution of a precise grade depends on the specific characterization following the integration of histo-pathological and molecular information).

THE GLIOMA PROTEOME

The glioma proteome is revealed and accessible on the Human Protein Atlas (HPA) website (proteatlas.org). It is built on the GBM data available from The Cancer Genome Atlas program (TCGA) and combines transcriptomic data with antibody-based protein data.

The transcriptome analysis shows that 72% (n=14370) of all human genes (n=20090) are expressed in glioma. **Figure 8** shows the number of elevated and prognostic (unfavorable and favorable) genes in glioma.

The top 20 significant genes related to unfavorable and favorable prognosis in GBM are listed in **Table 1** and **Table 2**, respectively. For *unfavorable genes*, higher relative expression levels at diagnosis give significantly lower overall survival for the patients. For *favorable genes*, higher relative expression levels at diagnosis give significantly higher overall survival for the patients.

Figure 9 shows the different composition of mutated genes across high-grade (GBM) and low-grade gliomas.

THE GLIOMA PROTEOME

~72% of all human genes are expressed in glioma

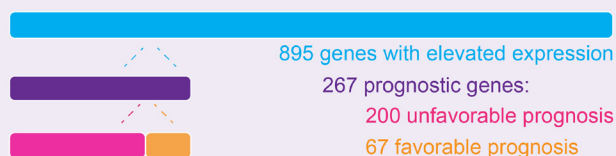


FIGURE 8. Elevated and prognostic genes in glioma.

The glioma proteome is built using TCGA transcriptomics data and antibody-based protein data. It shows that 895 genes have elevated expression in glioma, 267 of which are suggested as prognostic. Among the prognostic genes, 200 are associated with unfavorable prognosis and 67 are associated with favorable prognosis.

Table 1 and Table 2 list the top 20 most significant genes related to an unfavorable and favorable prognosis in GBM.

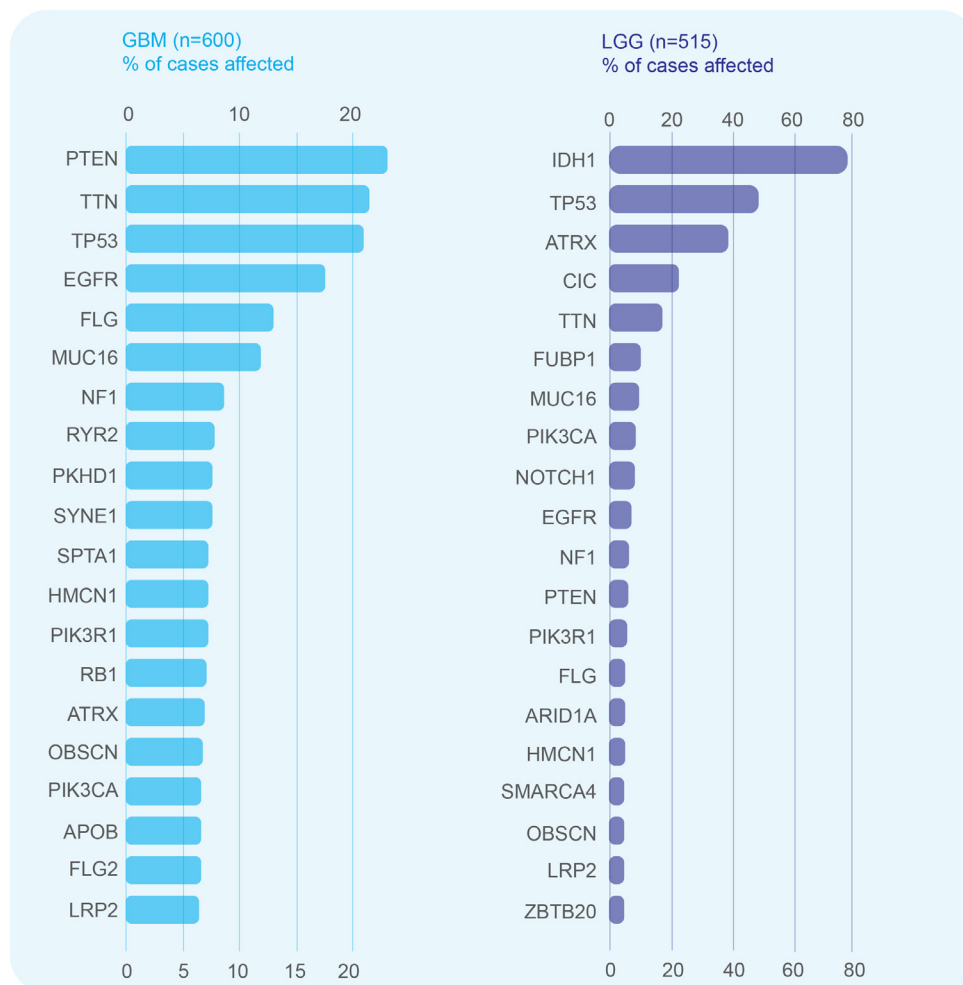


FIGURE 9. High-grade and low-grade gliomas differ in the composition of mutated genes. Distribution of most frequently mutated genes in high-grade (GBM) and low-grade gliomas expressed as % of total cases (n). Source TCGA.

TABLE 1.

Top 20 genes with highest significance associated with **unfavorable prognosis** in GBM.

Product Name	Predicted Location	Prognostic p-Value	Product Number
Anti-ADAM15	Intracellular, Membrane	5.83e-05	HPA011633
Anti-ARMC10	Intracellular, Membrane	8.9e-06	HPA011036, HPA011057
Anti-CEND1	Membrane	4.38e-05	HPA042527
Anti-DBNL	Intracellular	2.12e-05	HPA020265, HPA027735
Anti-EN2	Intracellular	1.74e-06	HPA045646, HPA069809
Anti-FAM174A	Membrane	2.57e-06	HPA019539
Anti-KDEL2	Membrane	5.4e-05	HPA016459
Anti-LRRC61	Intracellular	1.11e-05	HPA019355
Anti-MED10	Intracellular	2.65e-05	HPA042795, HPA054188
Anti-MGAT4B	Intracellular	6.15e-05	HPA012804, HPA052134
Anti-PODNL1	Intracellular, Secreted	5.61e-08	HPA042807
Anti-PTPRN	Intracellular, Membrane	1.45e-07	HPA007152, HPA007179
Anti-RPL39L	Intracellular	1.3e-06	HPA047105
Anti-RPP25	Intracellular	2.24e-05	HPA046900
Anti-SLC6A6	Membrane	5.75e-08	HPA016488
Anti-SPAG4	Intracellular, Membrane	6.31e-05	HPA048393, HPA061789
Anti-STC1	Intracellular, Secreted	6.44e-05	HPA023918
Anti-TSPAN13	Membrane	3.56e-05	HPA007426
Anti-WFDC2	Intracellular, Secreted	3.04e-05	HPA042302
Anti-ZBED6CL	Intracellular	3.12e-05	HPA019724, HPA055805

TABLE 2.

Top 20 genes with highest significance associated with **favorable prognosis** in GBM.

Product Name	Predicted Location	Prognostic p-Value	Product Number
Anti-ARHGAP12	Intracellular	0.000136	HPA000412
Anti-CDYL	Intracellular	0.000153	HPA035578
Anti-ETNPPL	Intracellular	9.52e-05	HPA044546, HPA072938
Anti-MARS2	Intracellular	0.000112	HPA035589, HPA035590
Anti-MIER1	Intracellular	3.44e-08	HPA019589, HPA050306
Anti-MTHFD2	Intracellular	0.000101	HPA049657
Anti-NEUROD1	Intracellular	0.000134	HPA003278
Anti-PATZ1	Intracellular	0.000106	HPA047893
Anti-RCOR3	Intracellular	1.35e-05	HPA007413, HPA007621, HPA071997
Anti-SAMD13	Intracellular	1.14e-08	HPA058929
Anti-SLC39A10	Intracellular, Membrane	1.46e-05	HPA036512, HPA036513, HPA066087
Anti-SOX21	Intracellular	8.79e-05	HPA048337, HPA064084, AMAb91309 AMAb91311
Anti-STARD7	Intracellular	3.89e-06	HPA064958, HPA064978
Anti-TBL1XR1	Intracellular	5.16e-05	HPA019182
Anti-ZBTB6	Intracellular	2.06e-05	HPA054111, HPA076894
Anti-ZFP1	Intracellular	4.24e-05	HPA044916, HPA062910
Anti-ZNF322	Intracellular	0.000128	HPA043161, HPA046692
Anti-ZNF420	Intracellular	3.57e-05	HPA059675
Anti-ZNF639	Intracellular	5.45e-05	HPA049023, HPA052163
Anti-ZNF821	Intracellular	0.00012	HPA036372, HPA042742

THE GLIOMA TUMOR MICROENVIRONMENT

The dynamic communication between tumor cells and the surrounding tumor microenvironment (TME) plays a crucial role in the sustained growth, proliferation, and invasion of gliomas, survival, evasion of cell death, metabolism, migration, and metastasis.

The glioma TME is highly heterogeneous, consisting of a multiplex of both cancerous and non-cancerous cells, including endothelial cells (ECs), immune cells, glioma stem-like cells (GSCs), and astrocytes, as well as non-cellular components such as the extracellular matrix (ECM) (Boyd 2021; Yekula 2020).

Several means of intercellular communication between the glioma tumoral cells and the TME have been documented. In the glioma TME, cells communicate through endothelial cells, growth factors, cytokines, chemokines, monocytes, macrophages, mast cells, microglia, T-cells, astrocytes, oligodendrocytes, and cancer stem cells (Cole 2020; Radin 2020).

All the different means of communication show a multifaceted role in supporting several hallmarks of cancer (**figure 10**).

Figures 11-16 show examples of immunostainings using Precisa Monoclonals antibodies against TME markers in different grades of gliomas.

Tables 3 and 4 list the Precisa Monoclonals markers from Atlas Antibodies.

Immunomodulation

In recent years, immunotherapy has become one of the major options for anti-cancer therapy. However, the complex mechanisms of glioma immunogenicity and microenvironment interactions have only partially been elucidated (Desland 2020). The ability of tumor cells to suppress both local and systemic immune responses and to hijack the communication with the TME, severely restrict treatment efficacy.

Immune cells constitute an important component of the glioma TME as they can reach up to 50% of the tumor mass content. Immune cells in glioma switch on the inflammatory process in the TME thus enhancing tumor development (Gieryng 2017; Strepkos 2020). Consistently, high-grade gliomas have a more immunosuppressive profile than low-grade gliomas.

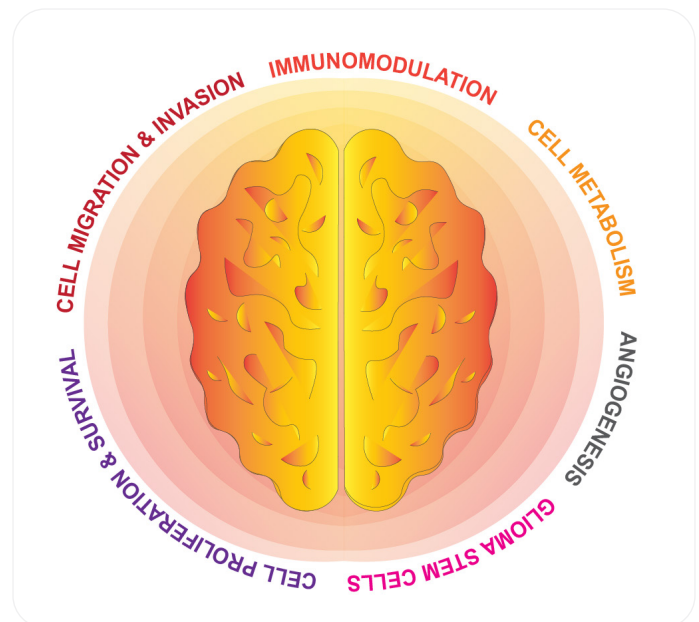


FIGURE 10. Understanding the dynamic glioma tumor microenvironment is necessary for the development of new immunotherapeutic strategies.

Glioma cells coexist with normal non-neoplastic cells. Glioma cells proliferate in an hypoxic immunosuppressive TME, with aberrant vasculature, abundant and distinct extracellular matrix and impaired blood-brain tumor barrier.

Four mechanisms in the TME have emerged as paramount for our understanding of gliomas and crucial for the development of new treatment strategies such as immunomodulation, angiogenesis, cancer stem cells, and drug resistance. Many of these mechanisms are interdependent and carry specific molecular signatures.

Among the immune-related genes ADORA2A, CD160, CD276, NRP1 and VTCN1 are significantly overexpressed in low-grade gliomas. In high-grade gliomas, VTCN1, BTNL2 and METTL21B are overexpressed, while the expression of CD86, HAVCR2, LAIR1 and VSIR is significantly decreased.

Cytokines and chemokines secreted by glioma cells induce infiltration of immunosuppressive cells (MDSCs, Tregs and TAMs) and the acquisition of pro-tumoral phenotypes by myeloid cells (M2 phenotype differentiation and PDL-1 and B7 expression).

Angiogenesis

The poor prognosis for glioblastoma is also partly due to the lack of successful drug delivery across the blood-brain tumor barrier.

Glioblastomas are highly vascularized tumors, and glioma growth depends on the formation of new blood vessels. Angiogenesis is a complex process involving proliferation, migration, and differentiation of vascular endothelial cells under the stimulation of specific signals.

The high metabolic demands of high-grade glioma, for instance, create hypoxic areas, that trigger the expression of PLVAP (a vascular marker of disrupted blood-brain barrier) and angiogenesis, leading to the formation of abnormal vessels and a dysfunctional blood-brain tumor barrier. Endoglin (CD105), a marker for immature blood vessels, is significantly higher in glioblastoma compared with peritumoral normal tissue (Burghardt 2021).

Glioma cancer stem cells and drug resistance

Chemoresistance and reoccurrence are major issues in the management of patients with glioma and the main cause of mortality. Reoccurrence of gliomas is largely associated with the ability of tumor cells to regenerate from treatment-resistant cancer stem cells within and surrounding the primary tumor after initial treatment. Glioma cancer stem cells (GSCs) are the main drivers of uncontrolled cells growth in high-grade gliomas, but also the resistance to therapy (Boyd 2021; Ma 2018).

GSCs, acts through a core set of neurodevelopmental transcription factors and oncogenes. High-grade gliomas show elevated transcription of stem cells such as ALDH1A1, EZH2, GFAP, SALL4, NANOG, and POSTN. Molecular surface markers such as CD133, CD44, A2B5, CD15, CD171 have also been implicated in the reoccurrence of gliomas and increased aggressiveness of glioblastoma.

Chi311 as modulator of stem cells cellular states.

Phenotypic plasticity in human tumors can be driven by activation of epithelial-to-mesenchymal transition (EMT) process by which cells acquire plasticity and gain the properties of stem cells.

CHI3L1 is a secreted protein acting as modulator of stem cell states and highly expressed in gliomas. CHI3L1 is used as a marker for invasion, migration and angiogenesis in glioblastoma (Guetta-Terrier 2021).

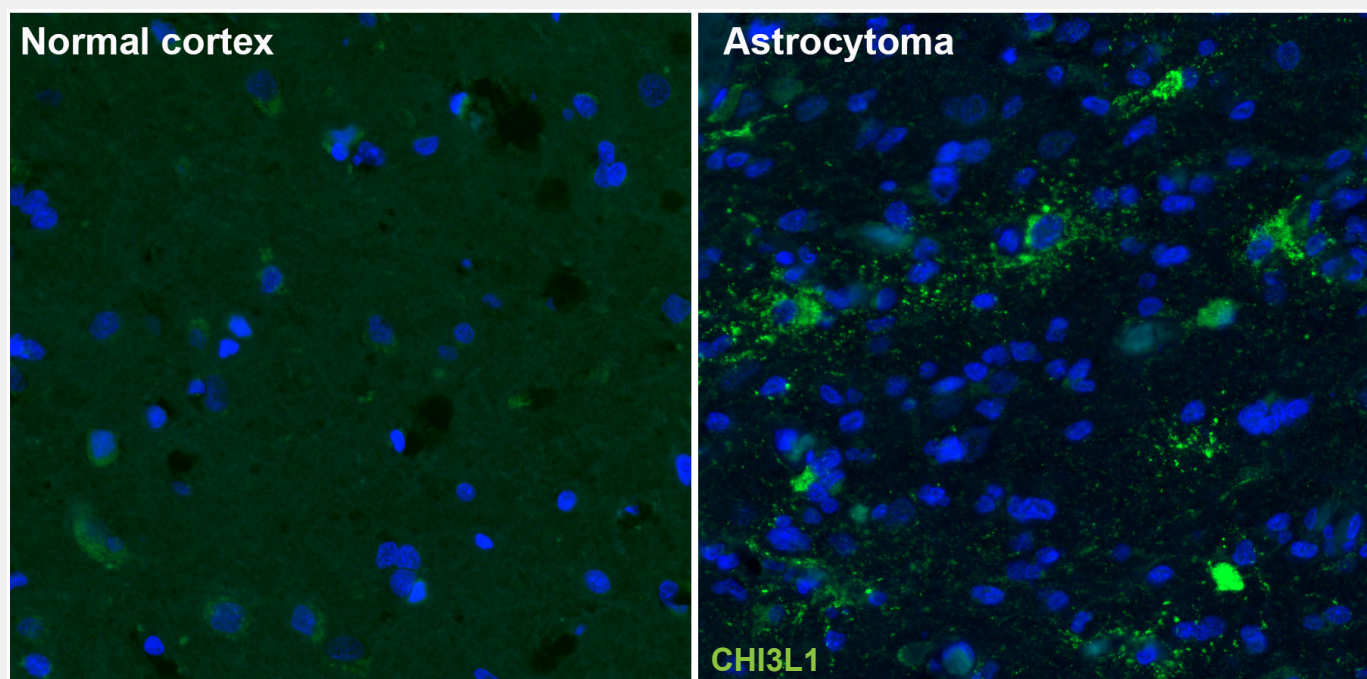


FIGURE 11. Fluorescence immunohistochemistry image of human normal cortex (left) and astrocytoma (right) samples stained with the monoclonal **Anti-CHI3L1 antibody (AMAb91777)** showing strong protein expression in astrocytoma (in green). Nuclei are counterstained by DAPI (in blue).

TME, including infiltration of myeloid cells such as microglia and macrophages, plays a significant role in glioma progression (Brandenburg 2020).

Glioma accumulated microglia/macrophages are a mixed cell population with pro- and anti-tumoral properties, although tumor-supporting effects generally predominate.

Microglial cells which present the antigens to the CD4-positive T-cells, express HLA-DRA protein which belongs to the HLA class II proteins (Neefjes 2011).

HLA expression is increased in glioblastoma patients, and there is some evidence suggesting that HLA-family can be used a specific molecular target in treatment of glioblastoma (Wang 2015).

METTL21B is involved in cell adhesion, angiogenesis and cell proliferation. Its expression is positively associated with glioma grade at the protein level. METTL21B facilitates immune evasion of tumor and affect prognosis by mediating macrophage polarization from M1 to M2 and regulating expression of immune checkpoints.

Nevertheless, patients with high METTL21B level are likely to have better response to immune checkpoints blockage therapy. Because of its substrate specificity, METTL21B is a promising target for the treatment of glioma (Shu 2021).

Figure 12 shows the high METTL21B expression in glioblastoma tumor cells as well as increased number of activated microglial cells (HLA-DRA) compared to controls.

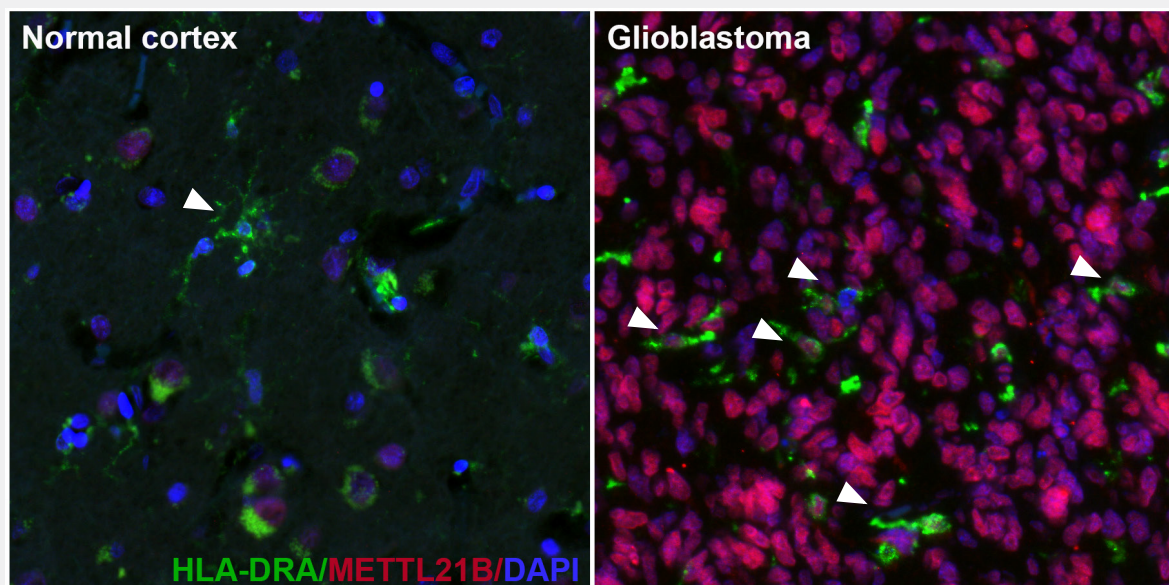


FIGURE 12 . Multiplexed IHC-IF staining of human normal cortex (left) and glioblastoma (right) samples using the **Anti-HLA-DRA monoclonal AMAb91674** (cytoplasmic, in green) and the **Anti-METTL21B polyclonal HAP043020** (nuclear, in red) antibodies. Arrows indicate activated microglia (HLA-DRA positive staining).

Targeting GSCs is an extremely important aspect of the clinical treatment of gliomas. A better comprehension of glioma GSCs provide functional insights into the dynamic of cellular communication during gliomagenesis, creating new opportunities for diagnostics and therapeutics.

The transcription factor SALL4 participates in cell proliferation, apoptosis, cycle, invasion, evolution and drug resistance. SALL4 is overexpressed in glioma patients and correlated with poor outcome (Zhang L. 2015).

SALL4 acts by strengthening the PI3K/AKT signaling pathway (which is a well-known pathway in the regulation of tumorigenesis, significantly activated in glioma) thus reducing the expression of the tumor suppressor PTEN (Liu 2017).

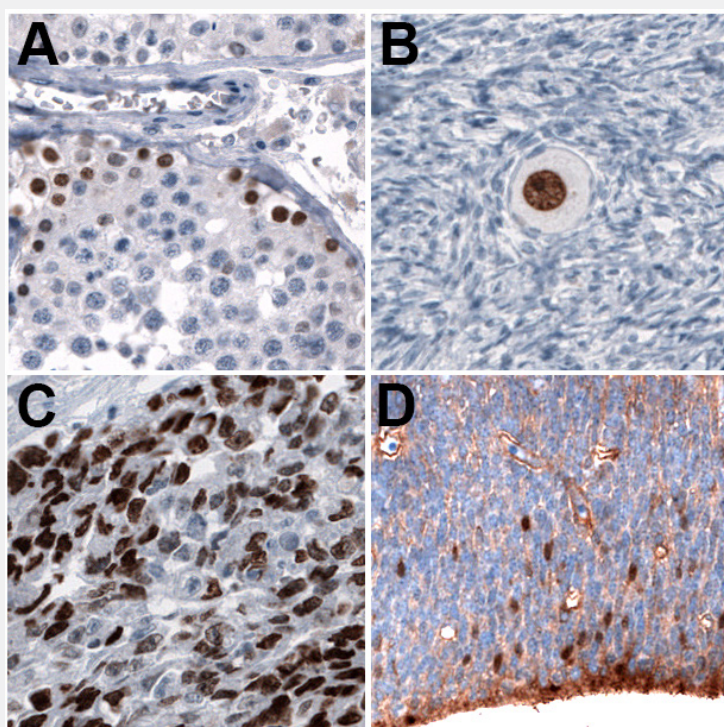


FIGURE 13. Characterization of SALL4 in human and mouse tissues.

Immunohistochemical staining using the **Anti-SALL4 AMAb91769** monoclonal antibody showing nuclear positivity in germinal cells in testis (A), oocyte (B) and embryonal testis carcinoma (C) human tissues, as well as nuclear positivity in a subset of cells in the developing brain in mouse embryo E11 (D).

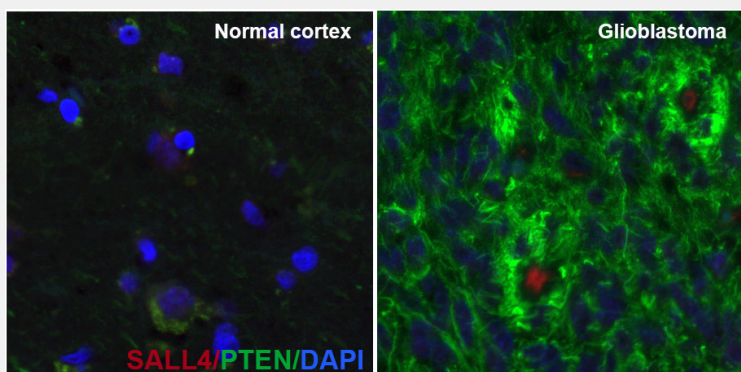


FIGURE 14. SALL4 is up-regulated in glioma samples. Multiplexed IHC-IF staining of human normal cortex and glioblastoma samples using the **Anti-SALL4 AMAb91769** monoclonal (nuclear, in red) and the Anti-PTEN monoclonal AMAb91736 (cytoplasmic, in green) antibodies. Nuclei are counterstained with DAPI (in blue).

The transcription factor EZH2 is highly expressed in gliomas and a potential target for immune therapy.

EZH2 is a histone H3 lysine methyltransferase that promotes tumorigenesis in a variety of human malignancies including gliomas by altering the expression of tumor suppressor genes. EZH2 overexpression in gliomas is associated with several immune checkpoints, cell cycle, DNA replication, mismatch repair, p53 signaling and tumor-infiltrating lymphocytes (Chen 2021).

The aldehyde dehydrogenases ALDH1A3 is associated with cell adhesion and tumor invasion and a marker of Mes-subtype of gliomas.

ALDH is a marker of cancer stem cells associated with the malignant phenotype in gliomas.

Among the ALDH isoforms, ALDH1A3 is overexpressed in high-grade than in low-grade gliomas, while ALDH1A1 is overexpressed in low-grade compared to high-grade gliomas.

Most of the Mes-subtype patients have high ALDH1A3 mRNA expression, indicating ALDH1A3 as a useful marker for Mes-subtype of gliomas (Zhang W. 2015).

Shugoshin 2 is critical in cell division and cell cycle progression.

Shugoshin 2 (SGO2) plays a crucial role in glioma cells proliferation. Data show that SGO2 expression positively correlates with WHO grading of human gliomas (Kao 2021).

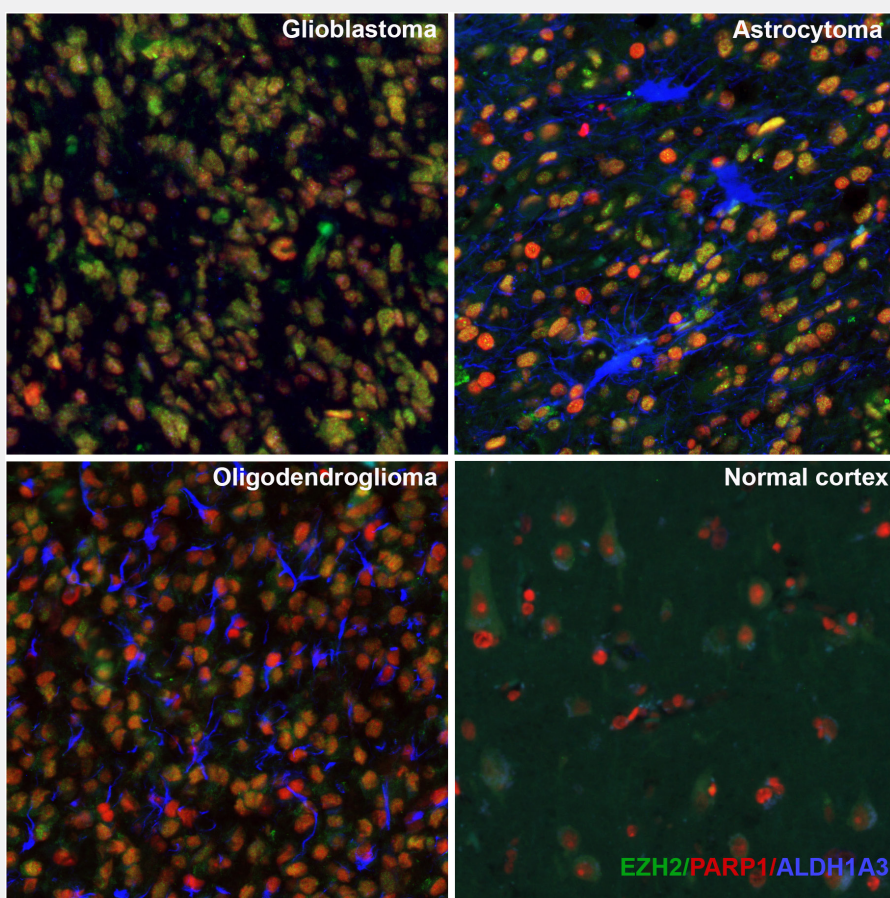


FIGURE 15. Multiplexed IHC-IF staining of human glioblastoma, astrocytoma, oligodendrocytoma and normal cortex samples using the **Anti-EZH2 AMAb91752** (green, nuclear), the **Anti-PARP1 AMAb90959** (red, nuclear) and the **Anti-ALDH1A3 AMAb91754** (blue, cytoplasmic) monoclonal antibodies.

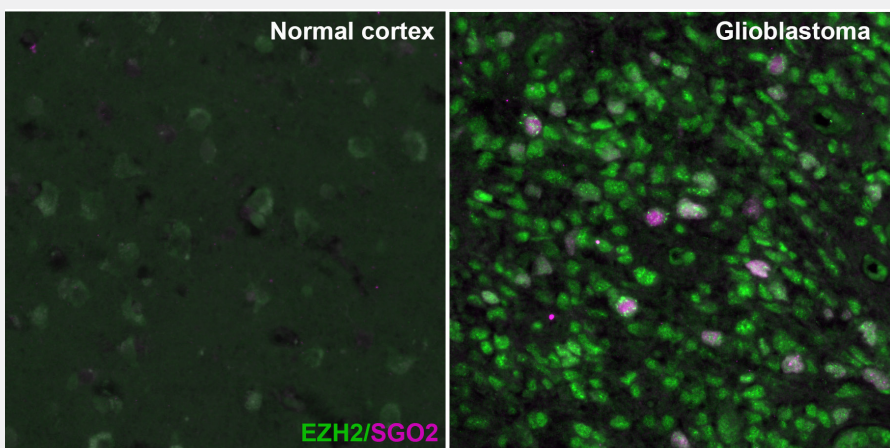


FIGURE 16. Multiplexed IHC-IF staining of human normal cortex and glioblastoma samples using the **Anti-EZH2 AMAb91750** (green, nuclear) monoclonal and the **Anti-SGO2 HPA035163** (magenta, nuclear) polyclonal antibodies.

TABLE 3.
PrecisA Monoclonals targeting the glioma tumor microenvironment



Product Name	Product Number	Isotype	Validated Applications	Biological role in gliomas	Protein Name
Anti-ALDH1A3	AMAb91754	IgG2a	IHC*, WB, ICC-IF*	Marker for mesenchymal glioma phenotype.	Aldehyde dehydrogenase family 1 member A3
Anti-CHI3L1	AMAb91777	IgG2b	IHC, WB	Carbohydrate-binding protein. Marker for invasion, migration and angiogenesis in glioblastoma.	Chitinase-3-like protein 1
	AMAb91778	IgG1	IHC, WB		
Anti-EZH2	AMAb91749	IgG2b	IHC*, WB, ICC-IF	Transcription factor. Marker for glioma stem cells.	Enhancer of zeste 2 polycomb repressive complex 2 subunit
	AMAb91750	IgG2a	IHC*, ICC-IF		
	AMAb91752	IgG2b	IHC*, WB, ICC-IF		
Anti-FOXM1	AMAb91766	IgG1	IHC, ICC-IF	Transcriptional activator involved in cell proliferation. Marker for glioma progression.	Forkhead box M1
Anti-GLI1	AMAb91771	IgG1	WB, ICC-IF	Cancer cell migration.	GLI family zinc finger 1
	AMAb91772	IgG1	IHC		
	AMAb91773	IgG2b	IHC, ICC-IF		
Anti-ID1	AMAb91756	IgG1	IHC, ICC-IF	Transcriptional regulator. Critical for glioblastoma initiation and chemoresistance.	Inhibitor of dna binding 1, hih protein
	AMAb91757	IgG2a	IHC*, ICC-IF		
Anti-NF1	AMAb91741	IgG2b	ICC-IF	Immunomodulation.	Neurofibromin 1
	AMAb91745	IgG1	ICC-IF		
Anti-PTEN	AMAb91735	IgG1	IHC*, WB	Cell cycle progression and proliferation. Marker for mesenchymal phenotype.	Phosphatase and tensin homolog
	AMAb91736	IgG2a	IHC*, WB		
Anti-POSTN	AMAb91763	IgG2a	IHC*, ICC-IF	Extracellular matrix protein. Cancer stem cell maintenance and metastasis.	Periostin
	AMAb91764	IgG2a	IHC*, ICC-IF		
Anti-RBFOX3	AMAb91746	IgG2b	IHC*	Transcription Factor. Marker for neural glyoma phenotype.	RNA binding protein fox-1 homolog 3
	AMAb91748	IgG2b	IHC*		
Anti-SALL4	AMAb91768	IgG1	IHC*, WB, ICC-IF	Transcription factor. Maintenance and renewal of stem cells.	Spalt like transcription factor 4
	AMAb91769	IgG1	IHC*, WB, ICC-IF		
	AMAb91770	IgG2a	ICC-IF		

* Products with enhanced validation for indicated applications.

TABLE 4.
Newly released Precisa Monoclonals targeting glioma



Product Name	Protein Name	Product ID	Isotype	Recommended Applications	Interspecies Sequence Homology
Anti-ADAM10	Adam metallopeptidase domain 10	AMAb91898	IgG1	WB*, IHC*	Mouse 100% - Rat 100%
		AMAb91899	IgG1	WB*, IHC*	Mouse 100% - Rat 100%
		AMAb91900	IgG2b	IHC*, ICC-IF	Mouse 100% - Rat 100%
		AMAb91901	IgG2b	IHC*, ICC-IF	Mouse 100% - Rat 100%
Anti-FOXO3	Forkhead box o3	AMAb91872	IgG2a	WB, IHC	Mouse 100% - Rat 100%
		AMAb91874	IgG2a	IHC	Mouse 100% - Rat 100%
Anti-IGFBP2	Insulin like growth factor binding protein 2	AMAb91884	IgG1	WB, IHC*	Mouse 68% - Rat 74%
		AMAb91885	IgG2a	IHC*	Mouse 68% - Rat 74%
Anti-IL33	Interleukin 33	AMAb91858	IgG2b	IHC*, ICC-IF	Mouse 48% - Rat 50%
Anti-LGR5	Leucine rich repeat containing g protein-coupled receptor 5	AMAb91887	IgG2a	WB, IHC*	Mouse 91% - Rat 87%
		AMAb91888	IgG1	IHC*	Mouse 91% - Rat 87%
Anti-PROX1	Prospero homeobox 1	AMAb91863	IgG1	WB, IHC	Mouse 100% - Rat 99%
		AMAb91865	IgG1	ICC-IF	Mouse 100% - Rat 99%
Anti-ZEB2	Zinc finger e-box binding homeobox 2	AMAb91862	IgG1	IHC*, WB, ICC-IF	Mouse 95% - Rat 93%
Anti-YAP1	Yes associated protein 1	AMAb91878	IgG2b	IHC	Mouse 95% - Rat 95%
Anti-WNT5A	Wnt family member 5a	AMAb91883	IgG2a	IHC	Mouse 100% - Rat 100%

* Products with enhanced validation for indicated applications.

References

- Brandenburg S, et al. *Distinction of microglia and macrophages in glioblastoma: close relatives, different tasks?* Int J Mol Sci. 2020 Dec 27;22(1):194.
- Boyd NH, et al. *Glioma stem cells and their roles within the hypoxic tumor microenvironment.* Theranostics. 2021 Jan 1;11(2):665-683.
- Broniscer A, et al. *Clinical and molecular characteristics of malignant transformation of low-grade glioma in children.* J Clin Oncol. 2007 Feb 20;25(6):682-9.
- Burghardt I, et al. *Endoglin and TGF- β signaling in glioblastoma.* Cell Tissue Res. 2021 Jun;384(3):613-624.
- Chen YN, et al. *EZH2 is a potential prognostic predictor of glioma.* J Cell Mol Med. 2021 Jan;25(2):925-936.
- Cole AP, et al. *Microglia in the brain tumor microenvironment.* Adv Exp Med Biol. 2020;1273:197-208.
- Desland FA, et al. *The CNS and the brain tumor microenvironment: implications for glioblastoma immunotherapy.* Int J Mol Sci. 2020 Oct 5;21(19):7358.
- Furnari FB, et al. *Malignant astrocytic glioma: genetics, biology, and paths to treatment.* Genes Dev. 2007 Nov 1;21(21):2683-710.
- Gallia GL, et al. *PIK3CA gene mutations in pediatric and adult glioblastoma multiforme.* Mol Cancer Res. 2006 Oct;4(10):709-14.
- Giering A, et al. *Immune microenvironment of gliomas.* Lab Invest. 2017 May;97(5):498-518.
- Guetta-Terrier C, et al. *Chi3l1 is a modulator of glioma stem cell states and a therapeutic vulnerability for glioblastoma.* bioRxiv 2021.10.01.462786.
- Liu C, et al. *SALL4 suppresses PTEN expression to promote glioma cell proliferation via PI3K/AKT signaling pathway.* J Neurooncol. 2017 Nov;135(2):263-272.
- Louis DN, et al. *The 2021 WHO Classification of Tumors of the Central Nervous System: a summary.* Neuro Oncol. 2021 Aug 2;23(8):1231-1251.
- Kao Y, et al. *Shugosin 2 is a biomarker for pathological grading and survival prediction in patients with gliomas.* Sci Rep. 2021 Sep 17;11(1):18541.
- Ma Q, et al. *Cancer stem cells and immunosuppressive microenvironment in glioma.* Front Immunol. 2018 Dec 21;9:2924.
- Neefjes J, et al. *Towards a systems understanding of MHC class I and MHC class II antigen presentation.* Nat Rev Immunol. 2011 Nov 11;11(12):823-36.
- Paugh BS, et al. *Integrated molecular genetic profiling of pediatric high-grade gliomas reveals key differences with the adult disease.* J Clin Oncol. 2010 Jun 20;28(18):3061-8.
- Pollack IF, et al. *Children's Oncology Group. Rarity of PTEN deletions and EGFR amplification in malignant gliomas of childhood: results from the Children's Cancer Group 945 cohort.* J Neurosurg. 2006 Nov;105(5 Suppl):418-24.
- Radin DP, et al. *Interactions between tumor cells, neurons, and microglia in the glioma microenvironment.* Int J Mol Sci. 2020 Nov 11;21(22):8476.
- Shu X, et al. *METTL21B is a prognostic biomarker and potential therapeutic target in low-grade gliomas.* Aging (Albany NY). 2021 Aug 26;13(16):20661-20683.
- Strepkos D, et al. *Insights in the immunobiology of glioblastoma.* J Mol Med (Berl). 2020 Jan;98(1):1-10.
- Wang L, et al. *Screening of differentially expressed genes associated with human glioblastoma and functional analysis using a DNA microarray.* Mol Med Rep. 2015 Aug;12(2):1991-6.
- Yekula A, et al. *Extracellular vesicles in glioblastoma tumor microenvironment.* Front Immunol. 2020 Jan 21;10:3137.
- Zhang L, et al. *The expression of SALL4 in patients with gliomas: high level of SALL4 expression is correlated with poor outcome.* J Neurooncol. 2015 Jan;121(2):261-8.
- Zhang W, et al. *ALDH1A3: a marker of mesenchymal phenotype in gliomas associated with cell invasion.* PLoS One. 2015 Nov 17;10(11):e0142856.

VERY RELIABLE ANTIBODIES

Atlas Antibodies manufactures and provides over 22,000 highly validated monoclonal and polyclonal primary antibodies and control antigens targeting the majority of human proteins for tissue and cell analysis to explore and accelerate research in biology, pathology, and medicine. The portfolio covers different research areas such as neuroscience, cancer, cell biology, stem cell & development. All our products are rigorously evaluated for specificity, reproducibility, and performance and characterized for use in IHC, WB, and ICC-IF. Enhanced validation is applied as an extra level of security of antibody specificity in a defined context. Available in 25 µL and 100 µL unit sizes.



Atlas Antibodies Advanced Polyclonals.

Triple A Polyclonals™ are rabbit polyclonal primary antibodies developed within the Human Protein Atlas project. IHC characterization data from 44 normal and 20 cancer tissues is available on the Human Protein Atlas portal.

CREATED BY THE HUMAN PROTEIN ATLAS

With our roots in the Human Protein Atlas project, an integration of antibody-based imaging, proteomics, and transcriptomics, our antibodies are affinity-purified, reproducible, selective, and specific for their target proteins through our enhanced validation process. Our Triple A Polyclonals™ are developed within the Human Protein Atlas project.



Precise. Accurate. Targeted.

PrecisA Monoclonals™ are mouse monoclonal primary antibodies developed against a number of carefully selected targets. Clones are selected to recognize only unique non-overlapping epitopes and isotypes.

VALIDATED BY ENHANCED VALIDATION

We take great care to validate our antibodies in IHC, WB, and ICC-IF. Our antibodies are validated in all major human tissues and organs and 20 cancer tissues. Over 500 staining images support each antibody. As an additional layer of security, we perform Enhanced Validation. By using 5 different enhanced validation methods, we validate our antibodies for each combination of protein, sample, and application. Discover our Triple A Polyclonals™ and PrecisA Monoclonals™ antibodies targeting the majority of human proteins in cells, tissues, and organs.

PrEST Antigens

Recombinant protein fragments

PrEST Antigens™ are used as immunogens for the generation of Triple A Polyclonals and PrecisA Monoclonals.

EVIDENCED BY SCIENCE

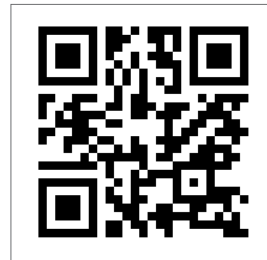
Made by researchers for researchers, our products are used all over the world and referenced in thousands of scientific peer-reviewed papers.

WE SUPPORT YOUR RESEARCH

Our scientific content and newsletter provide you with timely information about new product releases, research highlights, and much more. In addition, from our website, you can download informative white papers, protocols, guides, posters, infographics, roundups of recent research papers, and read blog posts and interviews.

HOW TO BUY OUR PRODUCTS

Our products are available worldwide. We deliver to all European destinations (excluding Russia), the USA, Canada, Australia, New Zealand, and Israel. In addition, we expand our offering through trusted partners worldwide. You can shop our entire catalog online or find your local supplier. Visit our website: atlasantibodies.com



Contact us: contact@atlasantibodies.com

Visit us: atlasantibodies.com

Follow us: [@atlasantibodies](https://twitter.com/atlasantibodies)

We are continuously updating our catalogs.

Please refer to the online version for the latest updates of this document.

Atlas Antibodies logo, Triple A Polyclonals™, PrecisA Monoclonals™, PrEST Antigens™ are trademarks or registered trademarks of Atlas Antibodies AB. All other trademarks are the property of their respective owners. Products are for research use only. Not for use in diagnostic procedures. © Atlas Antibodies AB 2023.