



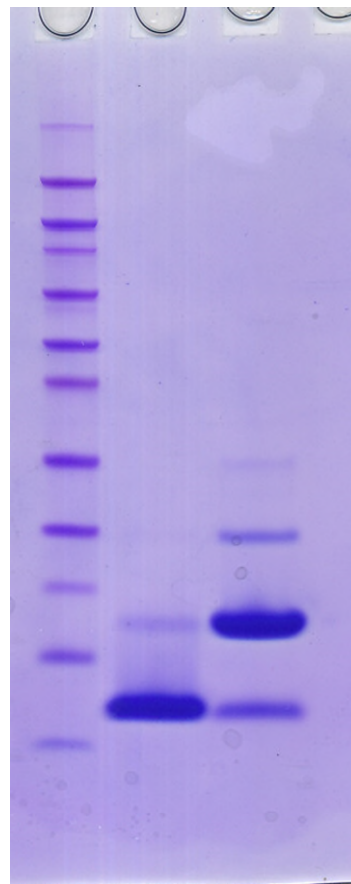
Affibody AB  
Scheeles Väg 2, SE-171 65 Solna, Sweden  
Phone +46-(0)8-598 838 00  
E-mail: [reception@affibody.com](mailto:reception@affibody.com)  
[www.affibody.com](http://www.affibody.com)

## Anti-EGFR Affibody® Imaging Agent

<b>Catalog Number:</b>	10.2023.01.0001; 10.2023.01.0005
<b>Batch Number:</b>	080226X-PB03413
<b>Specificity:</b>	This Affibody® molecule binds to human EGFR. Cross reactivity with other species has not been tested.
<b>Feature:</b>	The Anti-EGFR Affibody® imaging agent is modified with a unique C-terminal cysteine for directed single-point chemical modification, facilitating labeling to thiol reactive reagents such as various fluorescent dyes.
<b>Mw:</b>	6.7 kDa
<b>Theoretical pl:</b>	4.6
<b>Concentration conversions:</b>	1 Abs <sub>280</sub> = 0.405 mg/ml 1 mg/ml = 2.47 Abs <sub>280</sub> units Molar extinction coefficient: 16602 M <sup>-1</sup> cm <sup>-1</sup>
<b>Purity:</b>	~90 % as determined by SDS-PAGE and RP-HPLC analysis.
<b>Conjugation:</b>	The Affibody® molecule contains a unique C-terminal cysteine ideal for directed chemical modifications. However, tail-to-tail dimers are spontaneously generated via a disulfide bridge between the C-terminal cysteines. Prior to coupling via the C-terminal cysteine, the Affibody® molecule needs to be reduced to expose the reactive cysteine residue. Recommended reducing condition is 20 mM DTT at a pH above 7.5 and incubation at room temperature for approximately 1 hour. Remove excess DTT by passage through a desalting column, not by dialysis.
<b>Form:</b>	Lyophilized protein. Lyophilized from 10 mM NH <sub>4</sub> HCO <sub>3</sub> .
<b>Amount:</b>	100 µg (10.2023.01.0001); 500 µg (10.2023.01.0005)

Warranty: Affibody® products are warranted to meet stated product specifications and to conform to label descriptions when used and stored properly. Unless otherwise stated, this warranty is limited to one year from date of sales for products used, handled and stored according to Affibody AB's instructions. Affibody AB's sole liability of the product is limited to replacement of the product or refund of the purchase price. Affibody® products are supplied for research use only. They are not intended for medicinal, diagnostic or therapeutic use. Affibody® products may not be resold, modified for resale or used to manufacture commercial products without prior written approval from Affibody AB.

**SDS-PAGE Analysis:** SDS-PAGE analysis of purified Anti-EGFR Affibody® Imaging Agent at reduced condition (lane 1) and non-reduced condition (lane 2) on NuPage 4-12 % Bis-Tris gel, with Novex Sharp ladder 3.5, 10, 15, 20, 30, 40, 50, 60, 80, 110, 160 and 260kDa (Invitrogen). Coomassie blue was used for staining.



**Endotoxin level:** Endotoxin level was determined to <0.05 EU/mg, using Endosafe PTS (Charles River).

**Stability:** There is no decrease in performance of the reconstituted Affibody® molecule (1 mg/ml in PBS) after 10 repeated freeze and thaw cycles or after storage for 2 weeks at room temperature

**Storage:** +4 °C is recommended for lyophilized protein. For reconstituted protein in physiological buffer, short-term storage at +4 °C is recommended. For longer term storage the protein solution should first be aliquoted and stored frozen at -20 °C.